



**Reshaping Attention and Inclusion Strategies for Distinctively
vulnerable people among the forcibly displaced**



Co-funded by the Horizon 2020 programme
of the European Union

Acknowledge us!

If you would like to use the RAISD project logo for further communication, dissemination and/or exploitation purposes, please follow this guidance on how to properly use our logotype. The folder contains several versions of the logotype and references to sizes and color.

Please, acknowledge us at press@raisd-h2020.eu about your activity!

Be informed that there is an obligation in (a) displaying the EU emblem and (b) include the [disclaimer](#) in all communication materials.

Thank You

Press Kit

Project title	Reshaping Attention and Inclusion Strategies for Distinctively vulnerable people among the forcibly displaced
Project Acronym	RAISD
Project number	22688
Duration in months	36 [start 01/02/2019]
Call (part) identifier	H2020-SC6-MIGRATION-2018
Topic	MIGRATION-08-2018 Addressing the challenge of forced displacement
Fixed EC Keywords	Globalisation, migration, interethnic relations
Free keywords	Inclusion strategy, vulnerable group, displaced people, vulnerability context, personalisation, community adapted, action research unit, methodology, data gathering, data mining, collaborative software.



Co-funded by the Horizon 2020 programme
of the European Union

This project has received funding from the European Union's Horizon 2020
research and innovation programme under grant agreement No 822688.

About RAISD

Forced displacement crises overcome societies and institutions all over the world. Pushed by the urgencies rather than events, **solutions are frequently reactive, partial, and disregard some groups.**

The project 'Reshaping Attention and Inclusion Strategies for Distinctively vulnerable people among the forcibly displaced' (RAISD) aims at **identifying highly Vulnerable Groups (VG) among these forcibly displaced people, analysing their specific needs, and finding suitable practices to address them.**

The concept of 'vulnerability context' considers the interplay between the features of these persons and their hosting communities, their interactions and experiences, and how different solutions for attention and inclusion affect them.

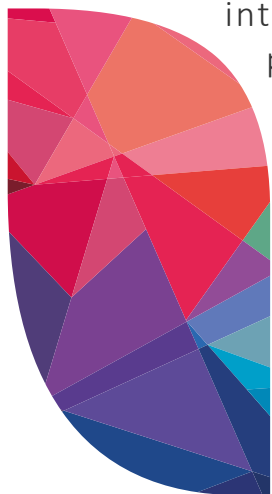
As a result of this work, a methodology to carry out these studies will be developed. They pursue characterizing these migrations and developing suitable aid strategies for them.

The Responsible Research and Innovation (RRI) frames the project. It proposes that all actors (including civil society) co-design actions, transversely integrates the gender perspective, and supports sustainability.

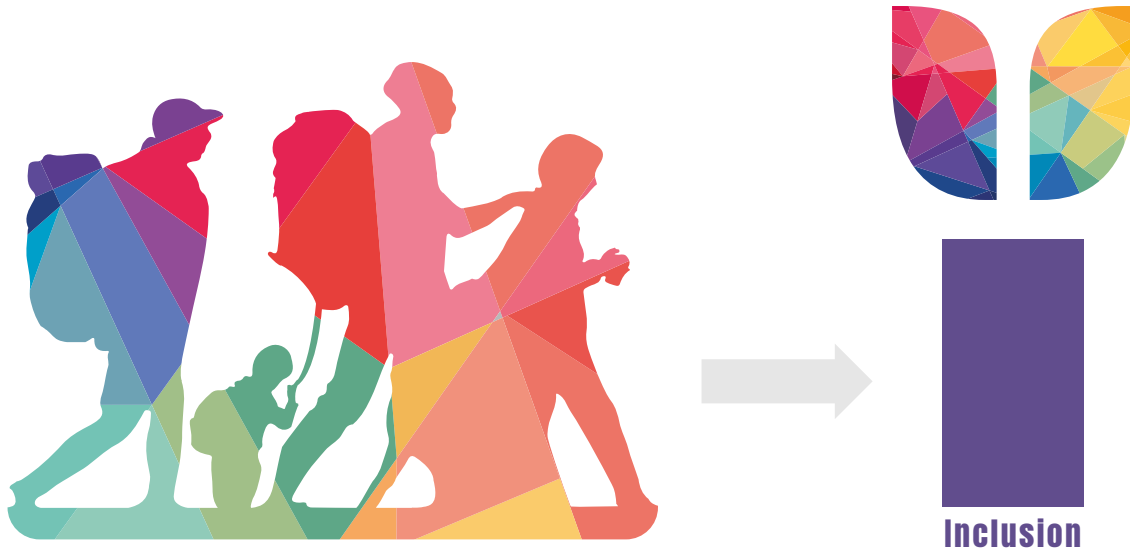
Our research **strategy will be based on methodological triangulation** (i.e. the combined application of several methodologies). We will implement it through a specific **participatory action research approach to fulfil the aim of undertaking advocacy-focused research, grounded in human rights and socio-ecological models.**

The team will work as a network of units in countries along migration routes. The units will promote the VG people' involvement, so they can **speak with their own voices, gather information, and test practices.**

Work will rely on a tight integration of Social and Computer Sciences research. **Automated learning and data mining will help to provide evidence-based recommendations, reducing a priori biases.** A software tool will support collaboration, continuing previous H2020- funded RRI work.



The logotype



RAISD is represented by the symbolic outline of a 'group on the move' of Forcibly Displaced People (FDP), sharing their own faceting of personal vital trajectories, contexts of departure, and individual vicissitudes.

Migration is a flow, of diversities!

RAISD aims at discovering these highly Vulnerable Groups (VG) analysing their specific needs regarding integration and well-being to finally identify new 'Vulnerability Contexts' (VCs) and TAISs (Tailored Attention and Inclusion Strategy), aimed at improving their inclusion in host societies.

The collection of data in this project will work in two separated phases, related to:



TRANSIT COUNTRIES: data collection from groups of FDP that are in transit, including interviews with migrants and volunteers of non-profit organisations in the refugee camps or centres in Lebanon, Jordan and Turkey.



EUROPEAN HOST COUNTRIES: Gathering and managing information provided by the FDP that are in European countries.

Logo | fonts

Logotype's font:
Plaster Regular

reunited

Project title's font:
Anton Regular

**Reshaping Attention and Inclusion Strategies for Distinctively vulnerable people
among the forcibly displaced**

Logo | Color palette

Symbol



Symbol Color HEX

				
#E73F3B	#FFDC3F	#E73F3B	#F6A85F	#FACB6B
				
#E52353	#E9537E	#EE7E93	#ED7466	#F1917C
				
#6DA2B4	#73C3B5	#90CBB9	#A1BF88	#5EA787
				
#253E7D	#009FC9	#6079BA	#E924C97	#7A4191

Logotype:

raised



PANTONE 18-3838 Ultra Violet
Color HEX #614E8E

Readability logo

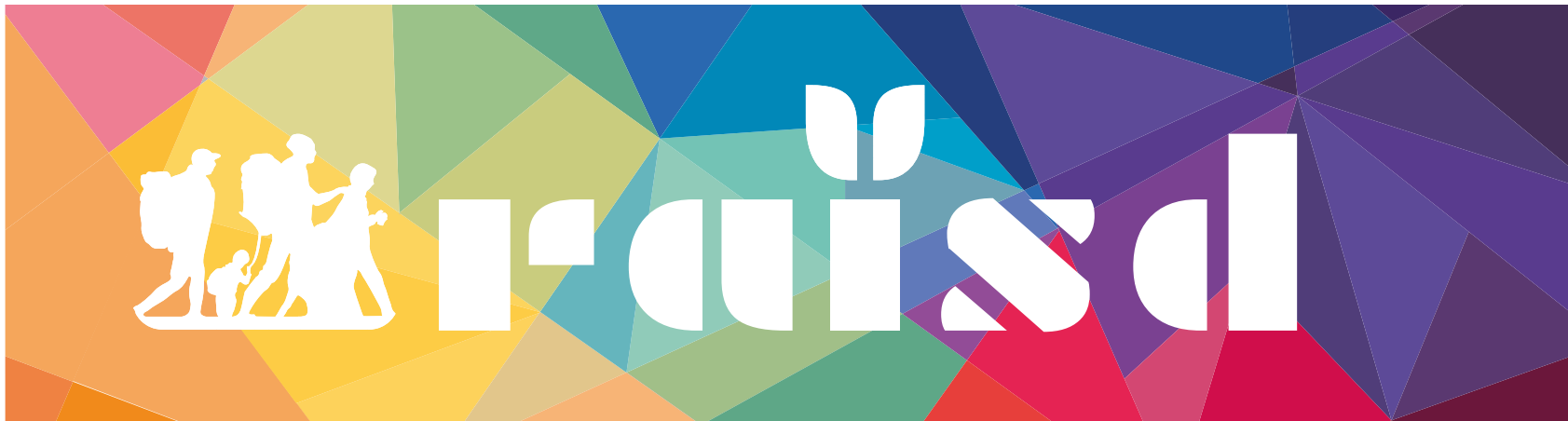
Horizontal logo



Vertical logo



Readability logo



Readability logo | “DON'TS”

NEVER reproduce the elements of the logo in any other size or placement relationship



NEVER reproduce the logo in any other colors



Press office | Contacts

Subscribe to our [e-Newsletter](#) to be informed about future research activities, target tailored inclusion practices and EU policy recommendations to actors in order to boost the implementation of effective strategies.

For overall project, research and results oriented questions, suggestion or remarks: info@raisd-h2020.eu

Communication and outreach related matters: press@raisd-h2020.eu

RAISD Data Protection Officer (DPO) at coordinating partner Institution, Universidad Complutense, Madrid. protdatos@rect.ucm.es



UCM | Universidad Complutense De Madrid

www.ucm.es



CESIE

www.cesie.org



UNIMED | Unione delle Università del Mediterraneo

www.uni-med.net



Helsingin Yliopisto

www.helsinki.fi



Menedék | Migránsokat Segítő Egyesület

www.menedek.hu



ANADOLU UNIVERSITY

Anadolu University

www.anadolu.edu.tr



Yarmouk University

www.yu.edu.jo



Lebanese International University

www.liu.edu.lb

EC Disclaimer



Co-funded by the Horizon 2020 programme
of the European Union

This project has received funding from the European Union's Horizon 2020 research and innovation programme under grant agreement No 822688.

The information and views set out in this report are those of the author(s) and do not necessarily reflect the official opinion of the European Union. Neither the European Union institutions and bodies nor any person acting on their behalf may be held responsible for the use which may be made of the information contained therein.

The background is a complex, abstract geometric pattern composed of numerous triangles of various sizes and colors. The colors include shades of red, pink, orange, yellow, green, blue, and purple, arranged in a way that creates a sense of depth and movement. The triangles are interconnected, forming a mosaic-like effect.

www.raisd-h2020.eu